



PEARLHOUSE  
RESIDENCES





WELCOME TO THE NEW  
HEART OF BAHRAIN

---



DAIRY

CITY AI



# WELCOME TO BAHRAIN HARBOUR

An upcoming urban community that houses two of Bahrain Harbour' iconic residential projects, The Harbour Row and Harbour Heights. Bahrain Harbour presents a unique blend of phenomenal architecture, world-class hotels, international dining experiences, cutting-edge entertainment and a seaside marina promenade. In Bahrain Harbour, always a good time guaranteed.

**BUSINESS HUB OF  
BAHRAIN**

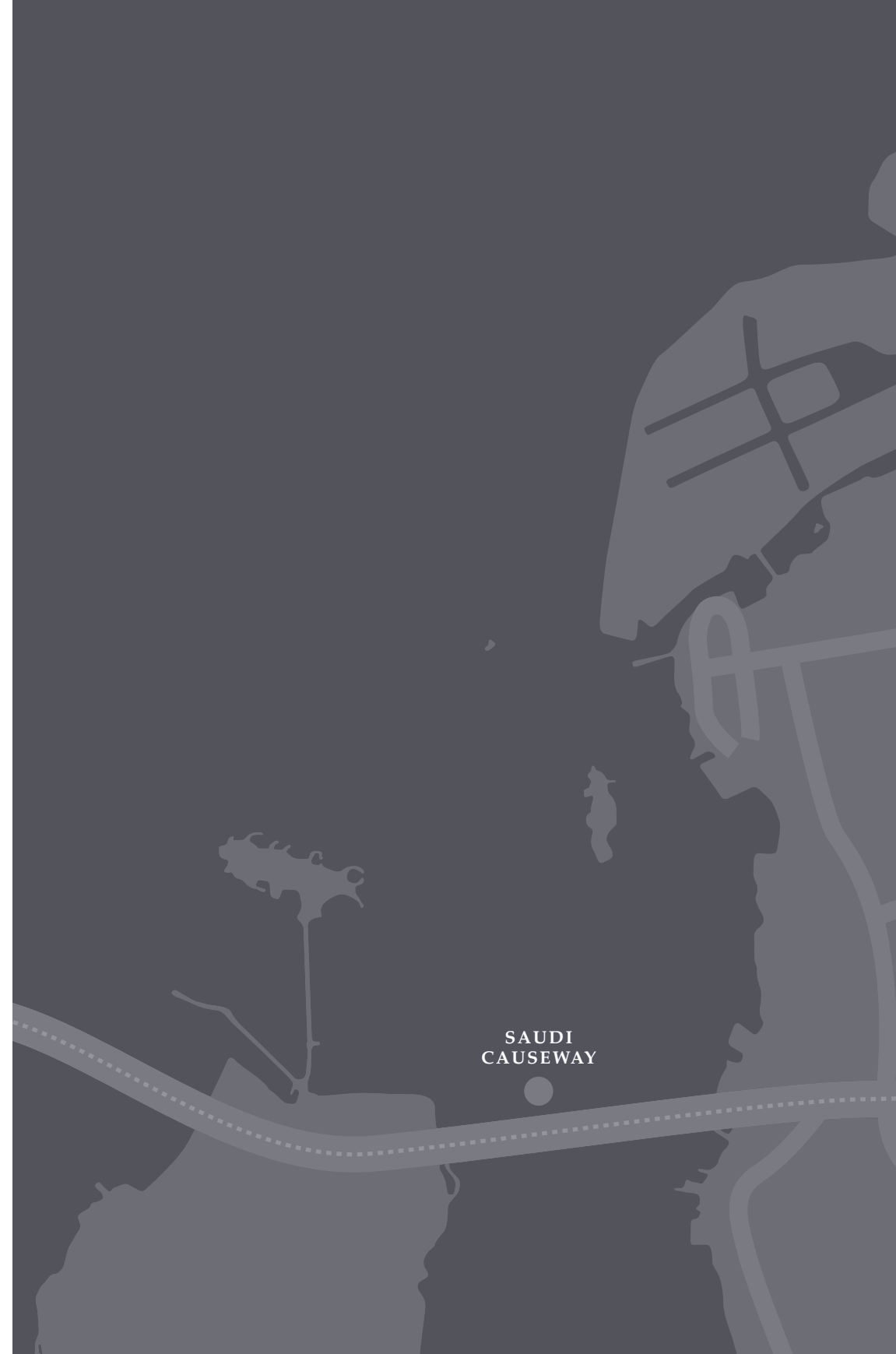
**MOST PRESTIGIOUS  
ADDRESS**

**HIGH RENTAL  
YIELDS**

**24 HOUR  
COMMUNITY**

# STRATEGICALLY POSITIONED

Bahrain Harbour spans over an area of land in downtown Bahrain and is within close proximity to leisure, business, and transportation centres in the Kingdom of Bahrain.





Arabian Gulf

BAHRAIN HARBOUR



AVENUES MALL

KING HAMAD HOSPITAL

BAHRAIN INTERNATIONAL AIRPORT



BAHRAIN NATIONAL THEATRE



WORLD TRADE CENTRE & MODA MALL



BAHRAIN CITY CENTRE MALL



SEEF DISTRICT



MANAMA SOUQ

REEF ISLAND

BAHRAIN BAY

RITZ RESORT

BAHRAIN FORT

JUFFAIR

KHALIFA BIN SALMAN PORT



BAHRAIN YACHT CLUB

ISA TOWN

SITRA



AL AREEN WILDLIFE PARK & BAHRAIN F1 GRAND PRIX CIRCUIT

SAAR

BUDAIYA









There are good hubs in Bahrain and there is  
**THE HARBOUR ROW**



EDGE BUILDING

HORIZON BUILDING

THE  
HARBOUR  
ROW  
— 0800 —

THE  
HARBOUR  
ROW  
— 0800 —

CHARTHO

THE HARBOUR ROW



# THE CENTER OF EVERYTHING

Mixing superlative residential and retail components, The Harbour Row is positioned in Bahrain's most exclusive waterside address.

**LOCATED IN THE HEART  
OF BAHRAIN**

**OVER 60 RETAIL  
STORES**

**OVER 3 KM OF  
MARINA PROMENADE**

**EASY ACCESS TO  
GLOBAL HOTELS**

# A PRIME LOCATION

## WALKING DISTANCE

The Avenues Mall & park, Manama Souq, Moda Mall, Bahrain World Trade Center and Bahrain Financial Harbour

## 5' DRIVE

City Center Mall, Seef Mall, Bahrain Bay, Four Seasons Hotel and Reef Island

## 15' DRIVE

Bahrain International Airport, King Fahd Causeway and Block 338

REEF  
ISLAND



SEEF  
AREA



BAHRAIN BAY




HARBOUR HEIGHTS



CHARTHOUSE RESIDENCES



PEARLHOUSE RESIDENCES

PARK

EDGE

HORIZON

VISTA

CANAL

PARK

WEST

EAST



BAHRAIN FINANCIAL HARBOUR

MANAMA SOUQ

THE AVENUES



HARBOUR GATE

GBCORP TOWER







THE CROWN JEWEL OF  
THE HARBOUR ROW

---



# PEARLHOUSE

RESIDENCES

The 8-storey residence rises in the heart of Manama within the Bahrain Harbour District, only steps away from the iconic Bahrain Financial Harbour and Harbour Heights. Residents can experience life in spacious, superbly crafted apartments with an exquisite range of amenities surrounded by breathtaking vistas and crystal waters.







Seen

CITY I

BRYMOR

DAIRY

Caffé





# THE NEW HEART OF BAHRAIN

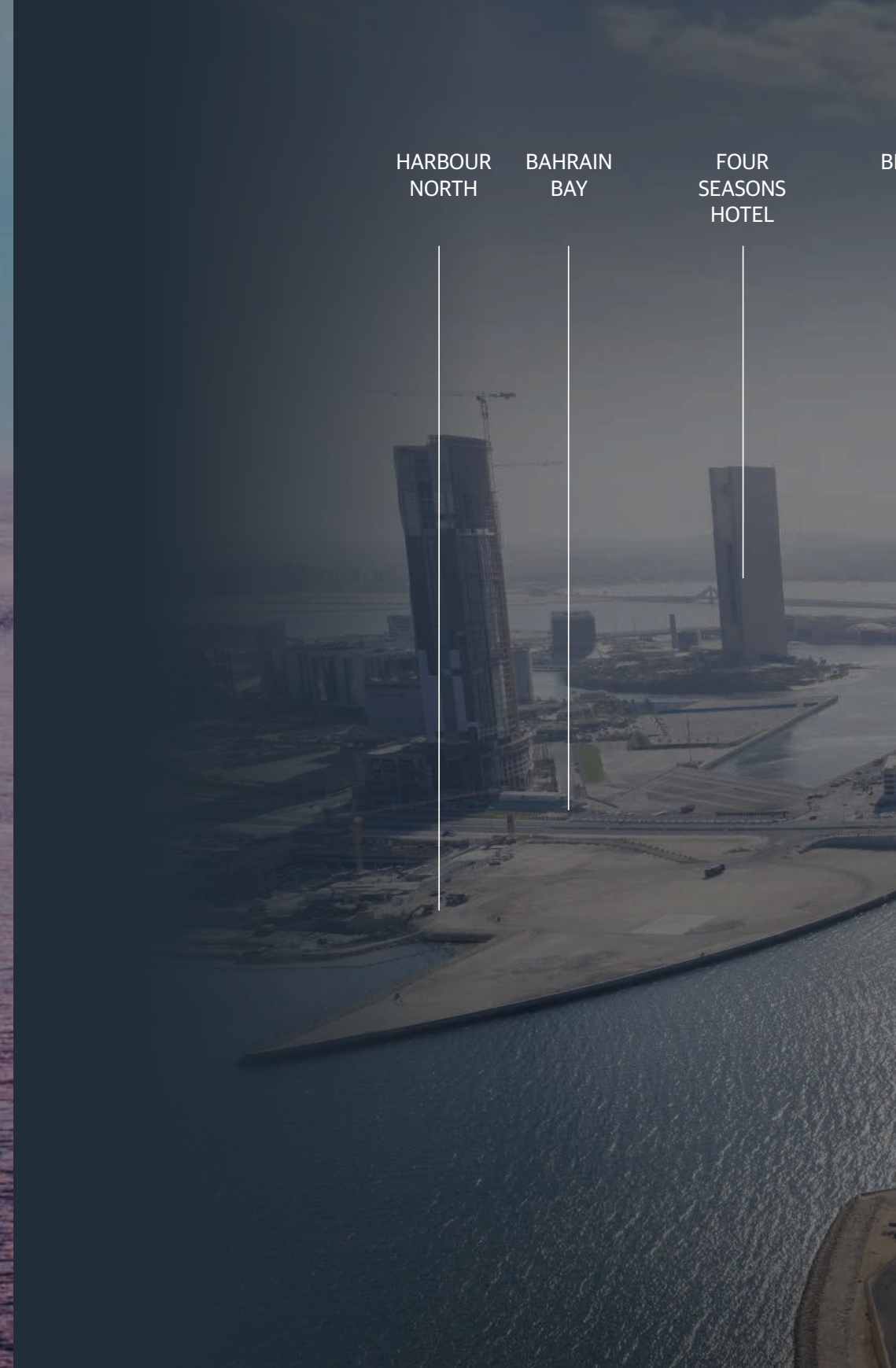
Pearlhouse Residences offers a variety of layouts to suit every lifestyle. These branded residences are available as 1, 2 and 3-bedroom layouts, ranging from 65sqm to 636sqm. Each unit feature top of the line appliances and fixtures and select residences also feature a balcony with unmatched view of the sea and the skyline.

HARBOUR  
NORTH

BAHRAIN  
BAY

FOUR  
SEASONS  
HOTEL

B



BF NEW  
HQ

HARBOUR  
HEIGHTS

THE  
AVENUES

DIPLOMATIC  
AREA

WORLD  
TRADE  
CENTER

THE  
HARBOUR  
ROW

BAHRAIN  
FINANCIAL  
HARBOUR

MANAMA  
SOUQ



EAST



WEST

# A WATERFRONT DREAM LIKE NO OTHER

Pearlhouse Residences nestles directly in front of the Bahrain Financial Harbour's imposing twin towers, a short distance from both Bahrain International Airport and the Saudi Causeway.

**UNIQUE BRANDED  
APARTMENTS**

**24 HS DINE-IN  
SERVICE**

**EXCLUSIVE BUTLER  
SERVICE**

**DIRECTLY CONNECTED  
TO THE MARINA**











# A VIBRANT MARINA

Pearlhouse Residences provides a premium destination to those with the desire to live an upscale seaside lifestyle right by a marina promenade peppered with petit cafes and gourmet restaurants.

A truly downtown location, Bahrain Harbour provides a world-class lifestyle destination for people with the desire to live an urban lifestyle but who can't imagine life without the simple pleasure that only a stroll along a quayside in the evening can bring.

# REDEFINING LUXURY

Part of a larger masterplan, connecting it to neighboring commercial towers , and residential buildings and hotels, Bahrain Harbour will welcome people from all over the world.



Residents



Young professionals



Families



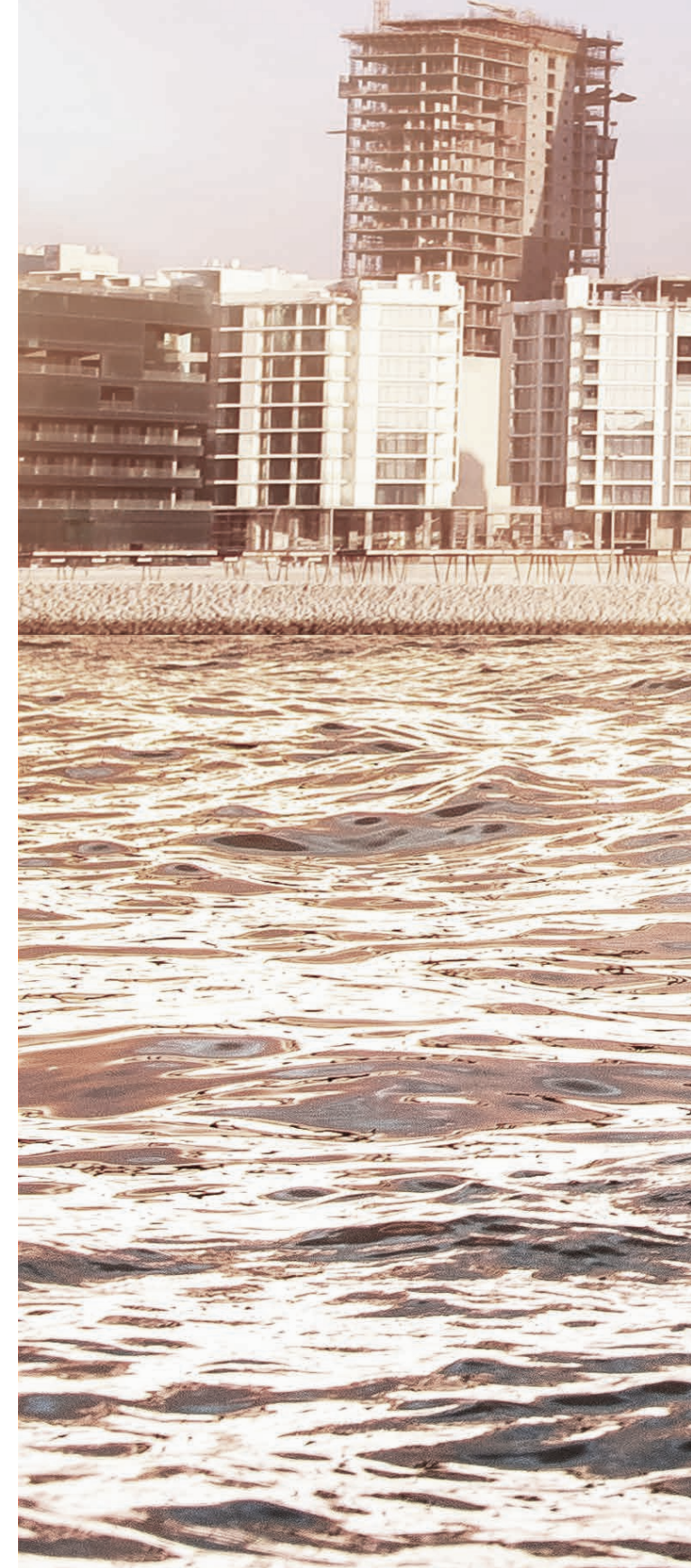
Business workers



Tourists



High net worth individuals









QUALITY IN EVERY  
SINGLE DETAIL





THE REEL



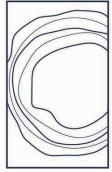








LAYOUTS



# PEARLHOUSE

RESIDENCES

EAST  
205

ONE BEDROOM  
AREA 77.7 SQM

SEA VIEW

REEF  
ISLAND

BAHDAM  
BAY

SEEF  
AREA

THE  
AVENUES





# PEARLHOUSE

RESIDENCES

EAST  
206

ONE BEDROOM  
AREA 83.1 SQM

SEA VIEW

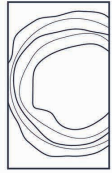
REEF  
ISLAND

BAHDAN  
BAY

SEEP  
AREA

THE  
AVENUES





# PEARLHOUSE

RESIDENCES

EAST  
207

ONE BEDROOM  
AREA 84.3 SQM

SEA VIEW

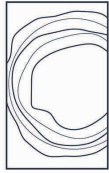
REEF ISLAND

BAHRAIN BAY

REEF AREA

THE AVENUES





# PEARLHOUSE

RESIDENCES

EAST  
208

ONE BEDROOM

AREA 77.1 SQM

SEA VIEW

REEF  
ISLAND

BAHRAIN  
BAY

SEEF  
AREA

THE  
AVENUES





# PEARLHOUSE

RESIDENCES

EAST  
209

ONE BEDROOM

AREA 136.8 SQM

SEA VIEW

REEF  
ISLAND

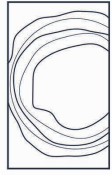
BAHRAIN  
BAY

SEEF  
AREA

THE  
AVENUES







# PEARLHOUSE

RESIDENCES

EAST  
210

ONE BEDROOM  
AREA 83.9 SQM



SEA VIEW

REEF  
ISLAND

BAHRAN  
BAY

SEEF  
AREA

THE  
AVENUES





# PEARLHOUSE

RESIDENCES

EAST  
211

ONE BEDROOM

AREA 79.0 SQM

SEA VIEW

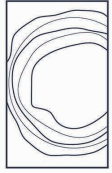
REEF  
ISLAND

BAHRAN  
BAY

SEEF  
AREA

THE  
AVENUES





# PEARLHOUSE

RESIDENCES

EAST  
212

ONE BEDROOM  
AREA 75.4 SQM

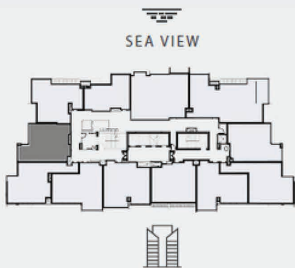
SEA VIEW

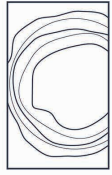
REEF  
ISLAND

BAHRAIN  
BAY

SEEF  
AREA

THE  
AVENUES





# PEARLHOUSE

RESIDENCES

EAST  
801

**TWO BEDROOM**  
**AREA 148.7 SQM**

SEA VIEW

REEF  
ISLAND

BAHRAN  
BAY

SEEF  
AREA

THE  
AVENUES





DAIRY

CITY AI





PEARLHOUSE  
RESIDENCES

To find out more, call us today on 80001234 or  
Whatsapp us now on +973 33044044



PEARLHOUSE  
RESIDENCES